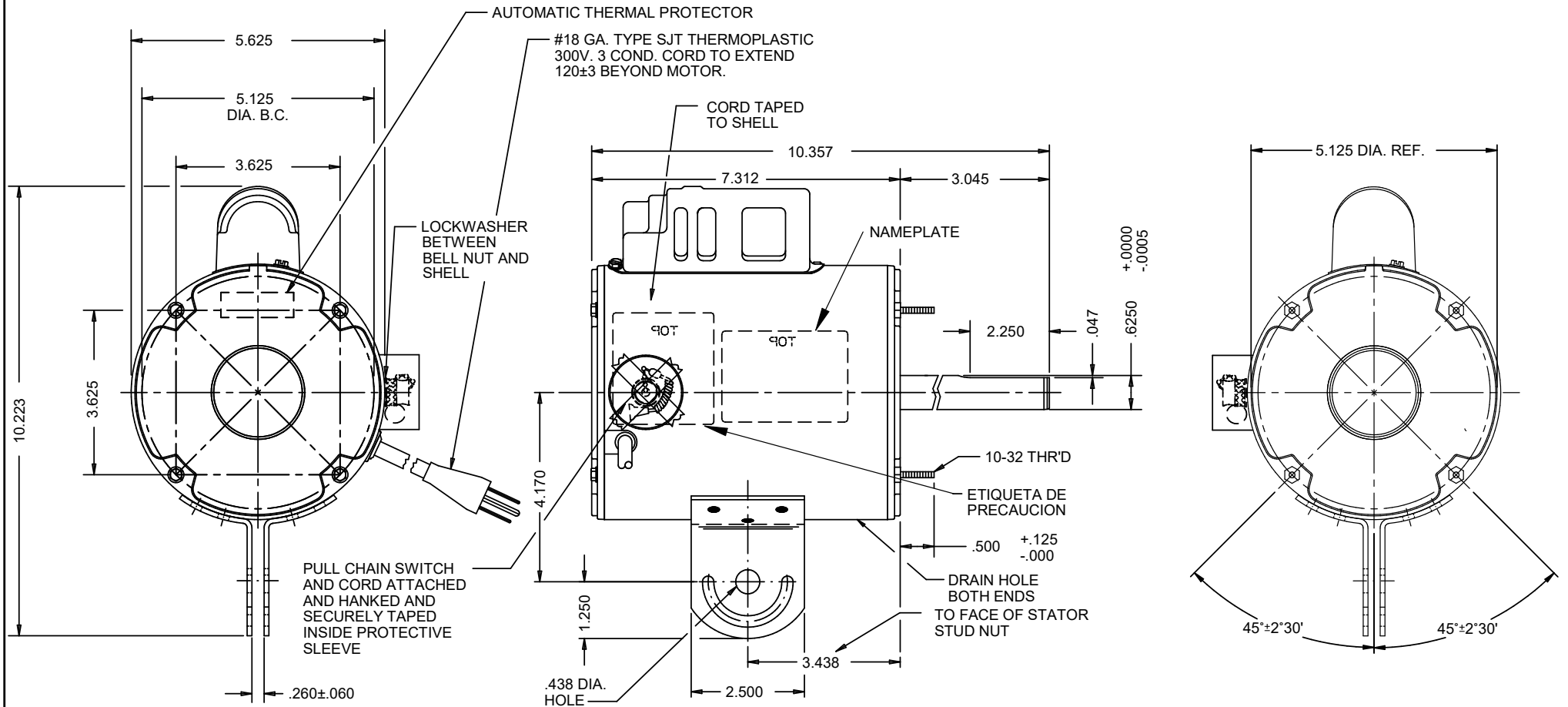


MODEL	REF.	CUSTOMER	HP	VOLTS	AMPS	HZ	RPM	ROTATION	CUSTOMER PN.	INSULATION CLASS	PHASE	DESCRIPTION / REMARKS
K55HXKRP-7324	--	USEM	1/2	115	5.8	60	1075/ 2SPD	CCW. LEAD END	1838			K55 YOKE MTD, TOT ENCLOSED ALL ANGLE



NIDEC MOTOR CORPORATION 24-JAN-19

REFER TO S.E.I.M. 24-1

REVISION RECORD FOR: ECO E44210		DIMENSIONS ARE FOR REFERENCE ONLY		NIDEC MOTOR CORPORATION			
CREATED DRAWING		UNLESS TOLERANCE IS SPECIFIED		INFORMATION DISCLOSED ON THIS DOCUMENT IS CONSIDERED PROPRIETARY AND SHALL NOT BE REPRODUCED OR DISCLOSED WITHOUT WRITTEN CONSENT OF NIDEC MOTOR CORPORATION			
ISSUED BY: J. ALVARADO		ENGINEER APPROVED: T. PALLETT		TITLE		REVISION DATE:	
				CUSTOMER DETAIL DRAWING		27-MAR-23	
				CODE		ITEM NO.	
				V02		845098	
				REV		SHEET NUMBER	
				-		1 OF 3	
				DWG SIZE		B	