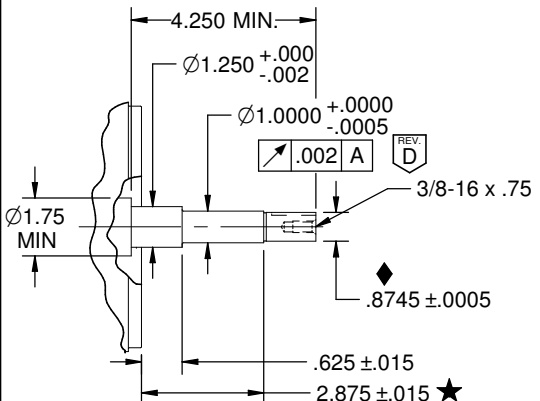


USEM M/N	CATALOG	HP	PHASE	FREQ	VOLTS	SPEED	FRAME	TYPE	INSUL. CLASS
DA98	EEQ750	7.5	1	60	230	3480	213JMZ	DM-4	F
CODE	TYP. FL EFF.	FLA	PF	SF	TYP. SF EFF.	SF AMPS	PF @ SF		
G	87.0	30.4	92.3	1.15	86.8	35.2	91.6		

- NOTES
- MOTOR PAINTED WITH BLACK-SEMI GLOSS-43-2747
  - 303 STAINLESS STEEL SHAFT EXTENSION
  - BURNDY GKA4C GROUNDING LUG OR EQUIVALENT WITH LOCKWASHER BETWEEN LUG AND FOOT
  - GASKET BOTH SIDES OF SPACER
  - GASKET BETWEEN OUTLET BOX COVER AND OUTLET BOX BASE



- NOTES:
- ★ - CUSTOMER CRITICAL DIMENSION.
  - ◆ - MAJOR DIMENSION.

ITEMS AND MATERIALS SPECIFIED HEREIN MUST COMPLY WITH THE EUROPEAN REDUCTION OF HAZARDOUS SUBSTANCES (REHS 2) DIRECTIVE 2011/65/EU, REGULATIONS (EC) NO. 1907/2006 ("REACH") AS OF 1 JUNE 2007 AND ALL SUBSEQUENT UPDATES. PLEASE REFER TO THE OFFICIAL EU DOCUMENTS FOR COMPLETE DEFINITION, RESTRICTIONS, AND LIMITS FOR EACH SUBSTANCE.

NIDEC CONFIDENTIAL  
NIDEC MOTOR CORPORATION 23-MAY-18

REVISION DESCRIPTION FOR: **D3420-00**  
**ADDED GTOL, DIMENSION 8.500 AND CHANGED DIMENSION 7.81 WAS 7.63, AND 6.55 WAS 6.38**

SCALE	UNITS
NONE	INCHES
TOLERANCES ON DIMENSIONS (UNLESS OTHERWISE SPECIFIED)	
INCHES	mm
ANGLES X°= ±1°	

TITLE

**DRAWING, DIMENSION**

ISSUED BY: **L. ARROYO** APPROVED BY: **P. ORTEGA**

CODE: \_\_\_\_\_ DWG NO: \_\_\_\_\_

**0645553**

**NIDEC MOTOR CORPORATION**

REVISION DATE: **22-JUN-18**

REV: **D** SHEET NUMBER: **1 OF 1** DWG SIZE: **B**