

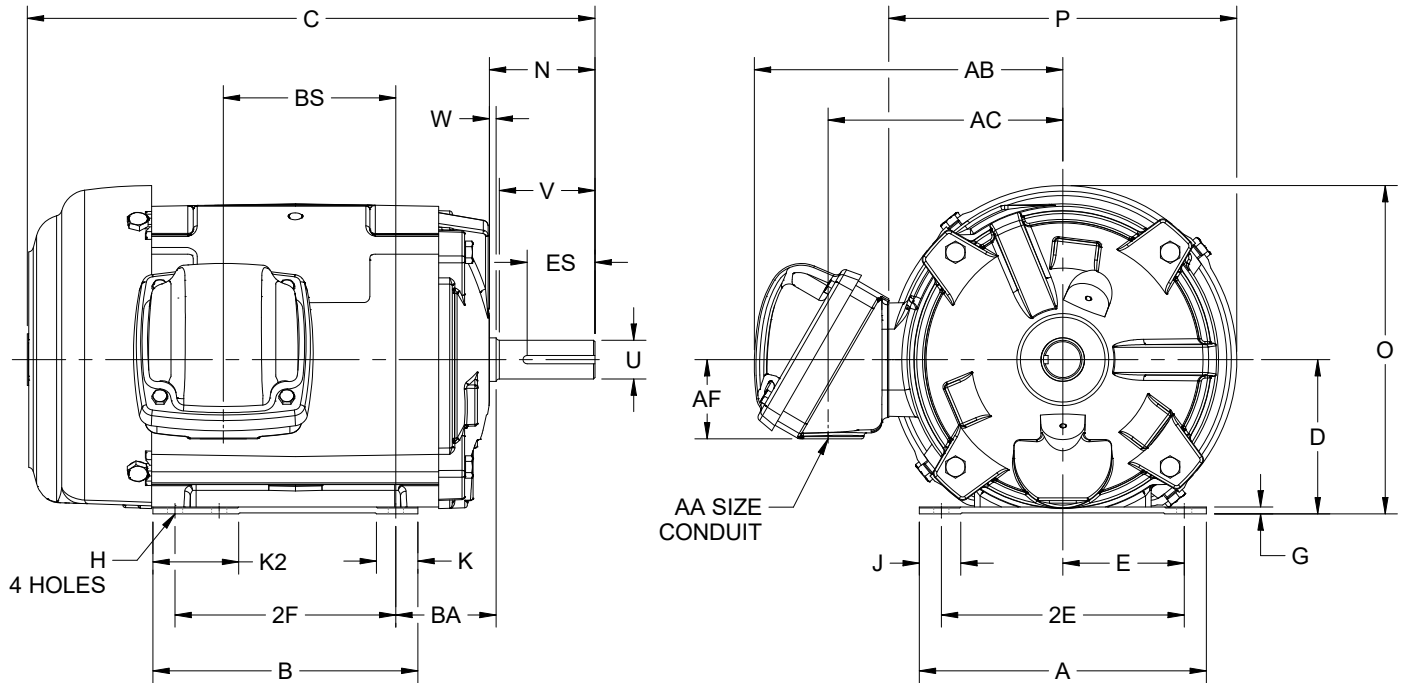
EFFECTIVE:
08-JAN-24

SUPERSEDES:
10-APR-15

DIMENSION PRINT
CAST IRON FRAME
FRAME: 140T
BASIC TYPE: L, N

PRINT:
07-2179

SHEET:
1 OF 1



ALL DIMENSIONS ARE IN INCHES AND MILLIMETERS

UNITS	A	B	C	D -.06	E	2E ±.03	G	H +.05	J	K	K2	N
IN	6.50	6.00	12.88	3.50	2.75	5.50	.16	.34	.94	.94	1.94	2.38
MM	165	152	327	89	70	140	4	9	24	24	49	60

UNITS	O	P ²	U -.0005	V MIN	W	AA	AB	AC	AF	BA	BS	ES MIN
IN	7.50	7.88	.8750	2.00	.16	3/4 NPT	6.94	5.31	1.75	2.25	3.91	1.41
MM	191	200	22.225	51	4		176	135	45	57	99	36

UNITS	SQ KEY
IN	.188
MM	4.78

FRAME	UNITS	2F ±.03
143T	IN	4.00
	MM	102
145T	IN	5.00
	MM	127

1. ALL ROUGH DIMENSIONS MAY VARY BY .25" DUE TO CASTING AND/OR FABRICATION VARIATIONS.
2. LARGEST MOTOR WIDTH.
3. CONDUIT BOX MAY BE LOCATED ON EITHER SIDE OF MOTOR CONDUIT OPENINGS MAY BE LOCATED IN STEPS OF 90 DEGREES REGARDLESS OF LOCATION STANDARD AS SHOWN WITH CONDUIT OPENING DOWN.
4. TOLERANCE UNITS ARE IN INCHES ONLY.

07-2179/D

Nidec Motor Corporation
St. Louis, Missouri

INFORMATION DISCLOSED ON THIS DOCUMENT IS CONSIDERED PROPRIETARY AND SHALL NOT BE REPRODUCED OR DISCLOSED WITHOUT WRITTEN CONSENT OF NIDEC MOTOR CORPORATION



ISSUED BY
D. CORTES
APPROVED BY
G. MARTINEZ

IHP_DP_NMCA (MAR-2011) SOLIDEDGE