

EFFECTIVE:
27-OCT-22

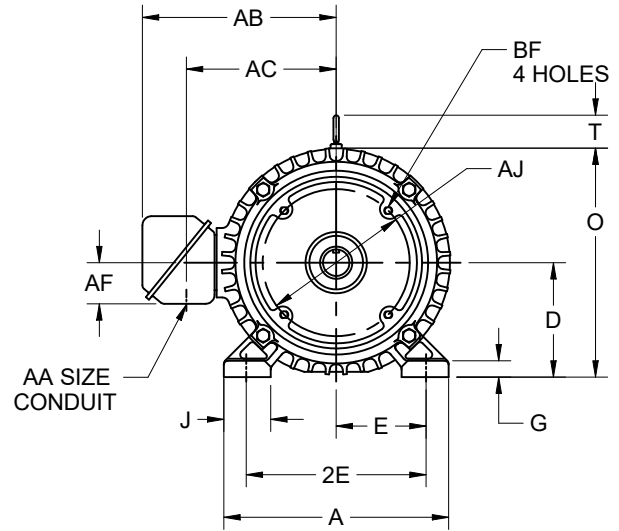
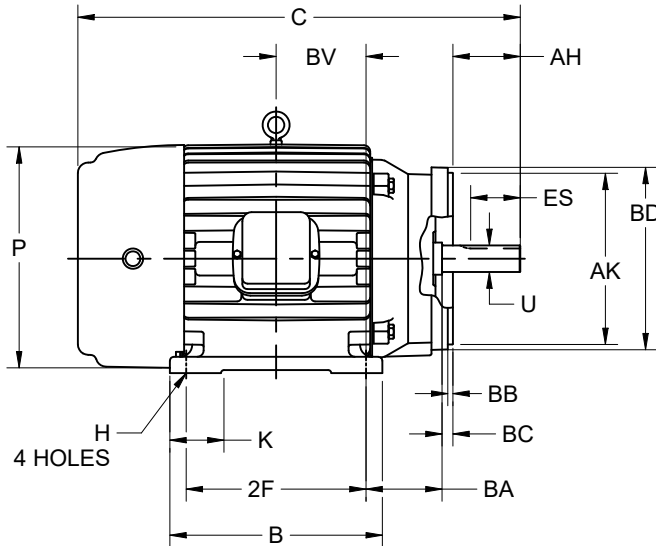
DIMENSION PRINT WITH NEMA "C" BRACKET

PRINT:
07-3398

SUPERSEDES:
24-APR-20

FRAME: 210TC
TYPE: L

SHEET:
1 OF 1



ALL DIMENSIONS ARE IN INCHES AND MILLIMETERS

UNITS	A	B	C	D -.06	E	2E ±.03	G	H +.05	J	K	O
IN	10.50	8.50	19.94	5.25	4.25	8.50	.59	.41	1.75	1.94	10.75
MM	267	216	506	133	108	216	15	10	44	49	273

UNITS	P ⁶	T	U ⁴	AA	AB	AC	AF	AH	AJ	AK -.003	BA
IN	11.13	2.00	1.3750	1 NPT	9.20	6.88	2.63	3.13	7.250	8.500	4.25
MM	283	51	34.925		234	175	67	80	184.2	215.90	108

UNITS	BB MIN	BC	BD MAX	BF ²	ES MIN	SQ KEY
IN	.25	.25	9.00	1/2-13 X .75	2.41	.313
MM	6	6	229		61	7.95

FRAME	UNITS	2F ±.03
213TC	IN	5.50
	MM	140
215TC	IN	7.00
	MM	178

TOLERANCES	
FACE RUNOUT	.004 T.I.R.
PERMISSIBLE ECCENTRICITY OF MOUNTING RABBET	.004 T.I.R.
PERMISSIBLE SHAFT RUNOUT	.002 T.I.R.

1. ALL ROUGH CASTING DIMENSIONS MAY VARY BY .25" DUE TO CASTING VARIATIONS.
2. TAP SIZE AND BOLT PENETRATION ALLOWANCE.
3. ALL TAPPED HOLES ARE UNIFIED NATIONAL COARSE, RIGHT HAND THREAD.
4. SHAFT EXTENSION DIAMETER TOLERANCE: +.0000/-.0005 UP TO 1-1/2 INCLUSIVE. LARGE DIAMETERS: +.000/-0.001.

5. CONDUIT BOX MAY BE LOCATED ON EITHER SIDE OF MOTOR. CONDUIT OPENINGS MAY BE LOCATED IN STEPS OF 90 DEGREES REGARDLESS OF LOCATION. STANDARD AS SHOWN WITH CONDUIT OPENING DOWN.
6. LARGEST MOTOR WIDTH.

Nidec Motor Corporation
St. Louis, Missouri

INFORMATION DISCLOSED ON THIS DOCUMENT
IS CONSIDERED PROPRIETARY AND SHALL NOT BE
REPRODUCED OR DISCLOSED WITHOUT WRITTEN
CONSENT OF NIDEC MOTOR CORPORATION



ISSUED BY
I. GONZALEZ
APPROVED BY
M. RAMIREZ

IHP_DP_NMCA (MAR-2011) SOLIDEDGE