

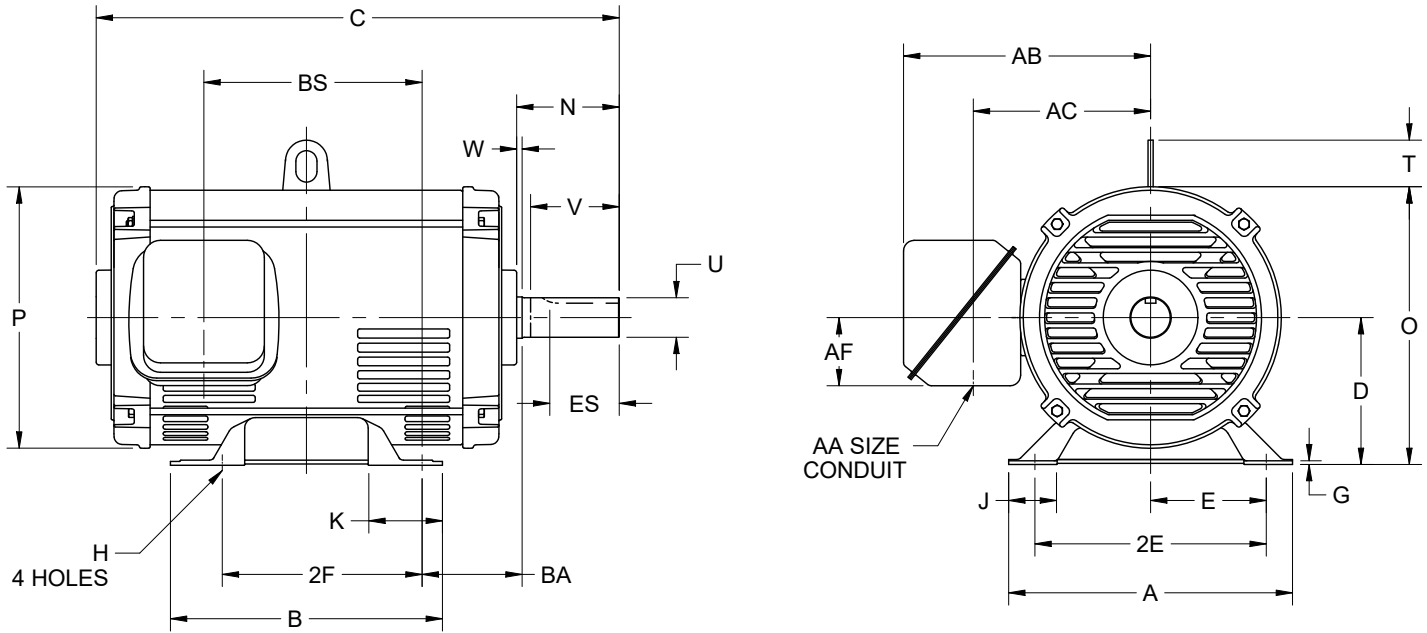
EFFECTIVE:
09-AUG-23

SUPERSEDES:
NEW

HORIZONTAL MOTORS
OPEN DRIP PROOF
FRAME: 320T
BASIC TYPE: D, DE, DI, FD, IMD

PRINT:
07-3646

SHEET:
1 OF 1



ALL DIMENSIONS ARE IN INCHES AND MILLIMETERS

UNITS	A	B	C	E	G	J	K	N	O	P ²	T
IN	15.00	14.00	27.25	6.25	.25	2.31	3.50	5.63	15.13	14.19	2.19
MM	381	356	692	159	6	59	89	143	384	360	56

UNITS	V MIN	W	AA	AB	AC	AF	BA	BS	ES MIN	SQ KEY	D -.06
IN	5.00	.38	2.00	12.69	9.31	3.25	5.25	11.50	3.91	.500	8.00
MM	127	10		322	237	83	133	292	99	12.70	203

UNITS	2E ±.03	H +.05	U -.001
IN	12.50	.69	2.125
MM	318	18	53.98

FRAME	UNITS	2F ±.03
324T	IN	10.50
	MM	267
326T	IN	12.00
	MM	305

1. ALL ROUGH DIMENSIONS MAY VARY BY .25" DUE TO CASTING AND/OR FABRICATION VARIATIONS.
2. LARGEST MOTOR WIDTH.
3. TOLERANCES SHOWN ARE IN INCHES ONLY.

4. STANDARD ASSEMBLY POSITION F-1 IS SHOWN. F-2 IS PROVIDED WHEN SPECIFIED CONDUIT OPENINGS MAY BE LOCATED IN STEPS OF 90° REGARDLESS OF LOCATION. STANDARD AS SHOWN WITH CONDUIT OPENING DOWN.

07-3646/-

Nidec Motor Corporation
St. Louis, Missouri

INFORMATION DISCLOSED ON THIS DOCUMENT IS CONSIDERED PROPRIETARY AND SHALL NOT BE REPRODUCED OR DISCLOSED WITHOUT WRITTEN CONSENT OF NIDEC MOTOR CORPORATION



ISSUED BY
D. CORTES
APPROVED BY
E. OVIEDO

IHP_DP_NMCA (MAR-2011) SOLIDEDGE