

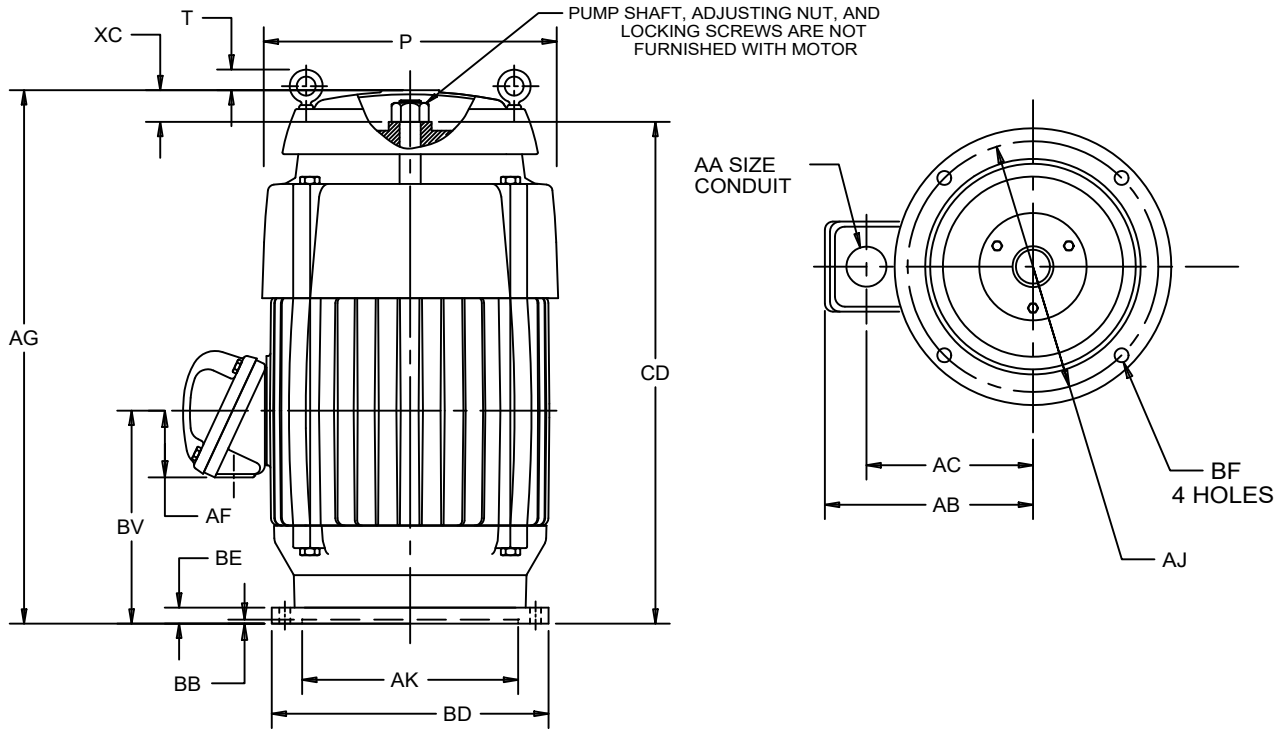
EFFECTIVE:
20-JUN-23

SUPERSEDES:
08-JUN-11

DIMENSION PRINT
EXPLOSION PROOF
FRAME: 324, 326TP, TPH
BASIC TYPE: LU, NU

PRINT:
09-2306

SHEET:
1 OF 1



ALL DIMENSIONS ARE IN INCHES & MILLIMETERS

| UNITS | P | T | AA | AB | AC | AF | AG | BE |
|-------|-------|-------|-------|-------|-------|------|-------|------|
| IN | 17.00 | -1.25 | 2 NPT | 14.25 | 10.75 | 3.88 | 35.63 | 1.00 |
| mm | 432 | -32 | | 362 | 273 | 99 | 905 | 25 |

| UNITS | BV | CD | XC | XG |
|-------|-------|-------|------|------|
| IN | 11.94 | 28.50 | 6.88 | 1.56 |
| mm | 303 | 724 | 175 | 396 |

| | FRAME | UNITS | AJ | AK | BB MIN | BD MAX | BF |
|--|------------|-------|--------|--------|-----------|-----------|-----|
| | 324,326TP | IN | 14.750 | 13.500 | .25 | 16.50 | .69 |
| | | mm | 374.65 | 342.90 | 6 | 419 | 18 |
| | 324,326TPH | IN | 9.125 | 8.250 | .19 | 12.00 | .44 |
| | | mm | 231.78 | 209.55 | 6 | 305 | 11 |

| TOLERANCES | 8.250 AK | 13.500 AK |
|---|-------------|-------------|
| FACE RUNOUT | .004 T.I.R. | .007 T.I.R. |
| PERMISSIBLE ECCENTRICITY OF MOUNTING RABBET | .004 T.I.R. | .007 T.I.R. |
| "AK" DIMENSION | -.000;+.003 | -.000;+.005 |

- 1: ALL ROUGH CASTING DIMENSIONS MAY VARY BY .25" DUE TO CASTING VARIATIONS.
- 2: LARGEST MOTOR WIDTH.
- 3: CONDUIT BOX MAY BE LOCATED IN STEPS OF 90-STANDARD AS SHOWN WITH CONDUIT OPENING DOWN.
- 4: (-) MINUS SIGN INDICATES EYEBOLT IS BELOW THE TOP OF THE UNIT.
- 5: TOLERANCES SHOWN ARE IN INCHES ONLY.

09-2306/A

Nidec Motor Corporation
St. Louis, Missouri

INFORMATION DISCLOSED ON THIS DOCUMENT IS CONSIDERED PROPRIETARY AND SHALL NOT BE REPRODUCED OR DISCLOSED WITHOUT WRITTEN CONSENT OF NIDEC MOTOR CORPORATION



ISSUED BY
R. MARTINEZ
APPROVED BY
F. LARA

IHP_DP_NMCA (MAR-2011) SOLIDEDGE