

EFFECTIVE:  
**02-AUG-11**

SUPERSEDES:  
**02-APR-02**

# VERTICALLY MOUNTED MOTOR

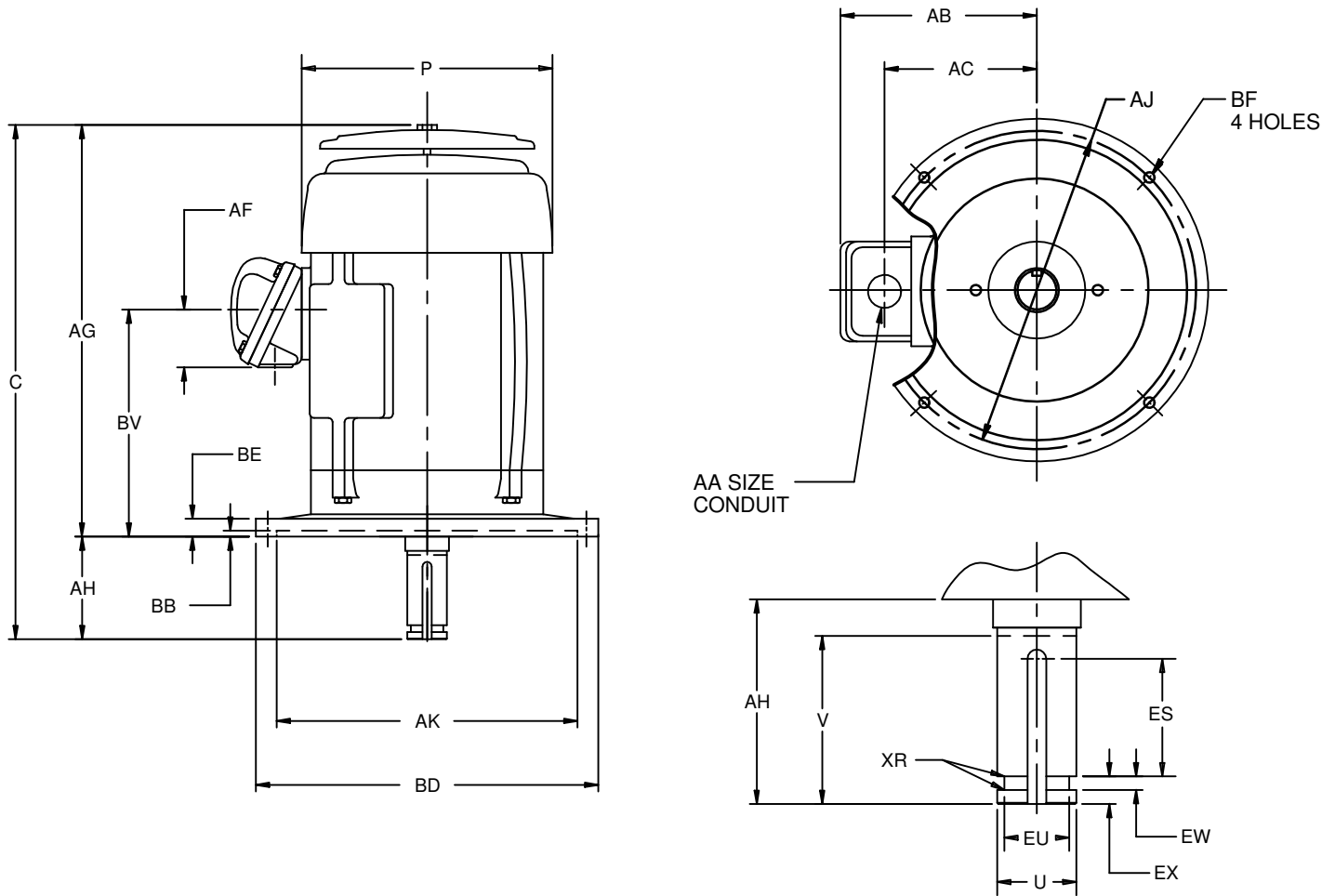
EXPLOSION PROOF

FRAME: 143,145VP

BASIC TYPE: LV, NV

PRINT:  
**09-2396**

SHEET:  
**1 OF 1**



ALL DIMENSIONS ARE IN INCHES AND MILLIMETERS

UNITS	C	P <sup>3</sup>	U -.0005	V MIN	AA	AB	AC	AF	AG	AH <sup>4</sup>	AJ	AK +.003
IN	15.38	7.75	.8750	2.75	3/4 NPT	7.63	6.00	1.75	12.63	2.75	9.125	8.250
mm	391	194	22.225	70		194	152	44	321	70	231.78	209.53

UNITS	BB MAX	BD MAX	BE	BF	BV	ES MIN	SQ KEY	EU -.005	EW +.002	EX -.005	XR
IN	.19	10.00	.56	.44	6.81	1.28	.188	.688	.375	.750	.03
mm	5	254	14	11	173	33	4.78	17.48	9.53	19.05	1

- 1: ALL ROUGH DIMENSIONS MAY VARY BY .25" DUE TO CASTING AND/OR FABRICATION VARIATIONS.
- 2: TAP SIZE AND BOLT PENETRATION ALLOWANCE
- 3: CONDUIT OPENING MAY BE LOCATED IN STEPS OF 180 DEGREES.  
STANDARD AS SHOWN WITH CONDUIT OPENING DOWN.
- 4: LARGEST MOTOR WIDTH.
- 5: DIMENSION MEASURED WITH MOTOR IN VERTICAL POSITION SHAFT DOWN.
- 6: TOLERANCES SHOWN ARE IN INCHES ONLY.

TOLERANCES	
FACE RUNOUT	.004 T.I.R.
PERMISSIBLE ECCENTRICITY OF MOUNTING RABBET	.004 T.I.R.
PERMISSIBLE SHAFT RUNOUT	.002 T.I.R.

09-2396/A

**Nidec Motor Corporation**  
St. Louis, Missouri

INFORMATION DISCLOSED ON THIS DOCUMENT IS CONSIDERED PROPRIETARY AND SHALL NOT BE REPRODUCED OR DISCLOSED WITHOUT WRITTEN CONSENT OF NIDEC MOTOR CORPORATION



ISSUED BY  
**E. WENDT**  
APPROVED BY  
**K. POTTER**

IHP\_DP\_NMCA (MAR-2011) SOLIDEDGE