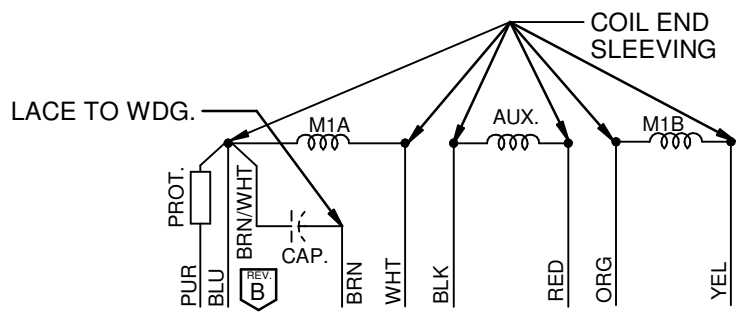
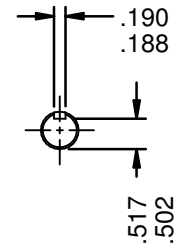
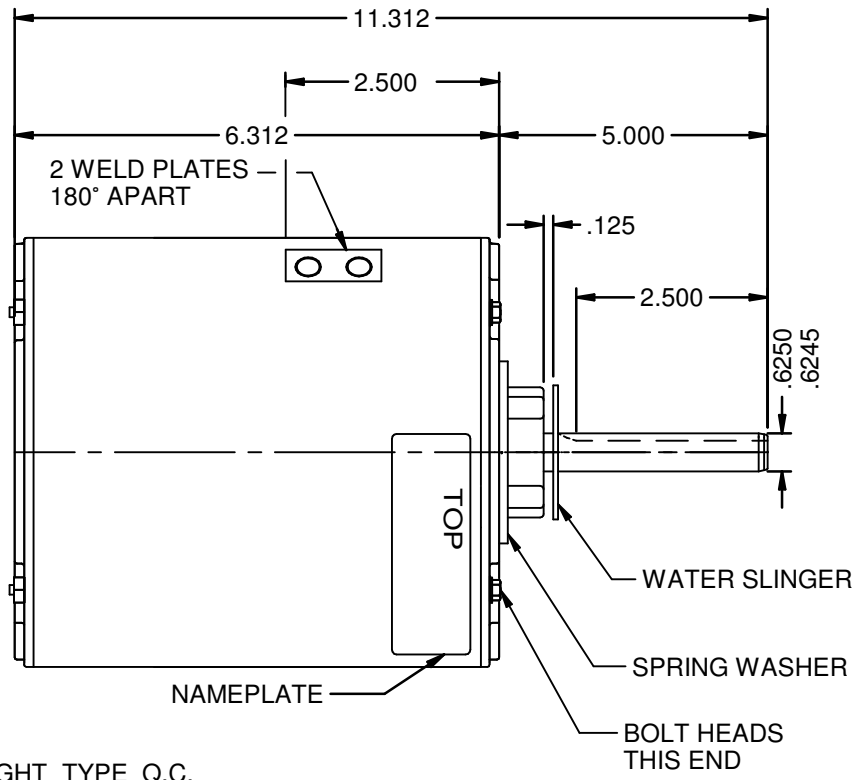


10 LEADS #18, .062 THICK INSUL. TO EXTEND BEYOND MOTOR:
 BLACK=98.0 ±2.0 WHITE = 98.0 ±2.0
 PURPLE=98.0 ±2.0 BLUE = 98.0 ± 2.0
 (3) BROWN=98.0 ±2.0 RED = 98.0 ± 2.0
 ORANGE= 98.0 ±2.0 YEL= 98.0 ±2.0

(10) .250 STRAIGHT TYPE Q.C. TERMINALS WITH INSUL. GRIP



TO REVERSE ROTATION INTERCHANGE BLACK AND RED LEADS

NIDEC MOTOR CORPORATION 13-Jan-15

MODEL	REF	CUSTOMER	HP	VOLTS	AMPS	HZ	RPM	ROTATION	CUSTOMER PN
K55HXC MV-1654	C37129	WHOLESALE	1	208-230/460	6.1/3.1	60	1125	CCW LEAD END REV	1376

SHEET NUMBER	REV	REVISION RECORD FOR: D2516-00	
1 OF 1	B	CHANGED LEAD FROM BRN TO BRN/WHT IN DIAGRAM OF CONNECTION.	
REVISION DATE		ISSUED BY	REVIEWED BY
13-JAN-15		I. GUTIERREZ	B. GAITAN
		ENGINEER APPROVED	
		B. GAITAN	

INFORMATION DISCLOSED ON THIS DOCUMENT IS CONSIDERED PROPRIETARY AND SHALL NOT BE REPRODUCED OR DISCLOSED WITHOUT WRITTEN CONSENT OF NIDEC MOTOR CORPORATION

NIDEC MOTOR CORPORATION

ALL DIMENSIONS ARE FOR REFERENCE ONLY UNLESS TOLERANCE IS GIVEN

TITLE	CODE	ITEM NO.	SIZE
ASSEMBLED VIEW	V01	802509	A