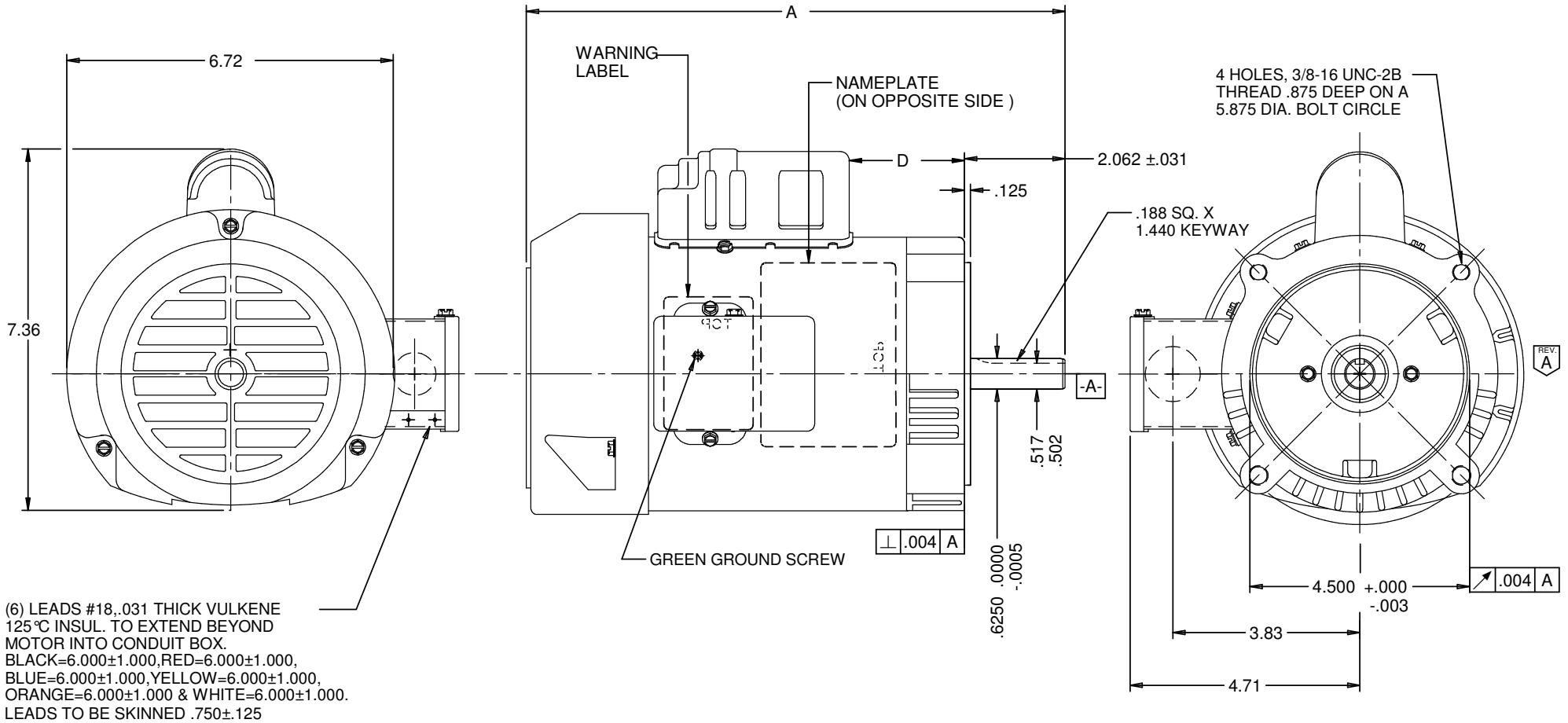


VAR	MODEL	CUSTOMER	CUSTOMER PN	A	B	C	D	PROTECTOR	HP	VOLTS	AMPS	HZ	RPM	CONN VOLTS	SF	ROTATION	DESCRIPTION / REMARKS
001	C55KHL-4941	WHOLESALE-INDUSTRIAL	T14C2JCR	11.03	--	--	3.07	NONE	1/4	115/208-230	6.5/2.8-3.2	60	1725	--	1.15	REVERSIBLE	BALL BEARING

SHAFT KEY TAPED TO MOTOR



(6) LEADS #18, .031 THICK VULKENE 125°C INSUL. TO EXTEND BEYOND MOTOR INTO CONDUIT BOX.
 BLACK=6.000±1.000, RED=6.000±1.000,
 BLUE=6.000±1.000, YELLOW=6.000±1.000,
 ORANGE=6.000±1.000 & WHITE=6.000±1.000.
 LEADS TO BE SKINNED .750±.125

NIDEC MOTOR CORPORATION 15-Aug-18

REFER TO S.E.I.M. 24-1

REVISION RECORD FOR: ECO E31420	
CHANGED THE VIEW OF BOTH SCREWS TO S05820750 (SCREW WITHOUT SLOT).	
ISSUED BY: G. ISASSI	ENGINEER APPROVED: J. SALINAS

TOLERANCES ON DIMENSIONS (UNLESS OTHERWISE SPECIFIED)	
INCHES .XX = ±.010 .XXX = ±.005	mm
ANGLES X° = ±1°	

NIDEC MOTOR CORPORATION			
INFORMATION DISCLOSED ON THIS DOCUMENT IS CONSIDERED PROPRIETARY AND SHALL NOT BE REPRODUCED OR DISCLOSED WITHOUT WRITTEN CONSENT OF NIDEC MOTOR CORPORATION			REVISION DATE: 22-AUG-18
TITLE CUSTOMER DETAIL DRAWING	CODE V02	ITEM NO. 804493	REV A
SHEET NUMBER 1 OF 6		DWG SIZE B	