

VAR	MODEL	CUSTOMER	CAT. NO.	A	B	C	D	HP	VOLTS	SF	AMPS	HZ	RPM	CONN VOLTS	PROT.	DESCRIPTION / REMARKS
001	P63SYAJG-1346	USEM	1813P	12.39	----	----	----	1	208-230/460	1.15	3.1-3.0/1.5	60&50	1725&1425	--	AUTO	N56H, ODP

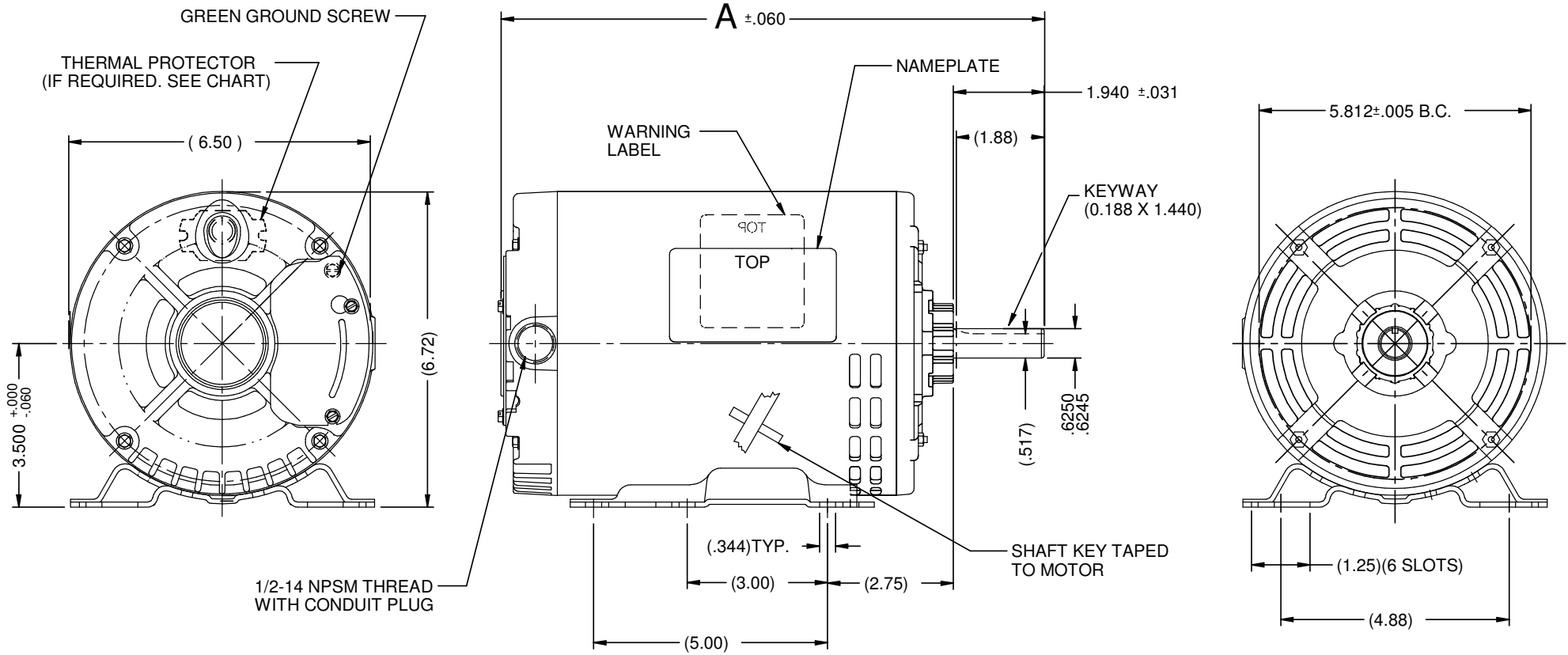
REV. A

REV. A

REV. A

REV. A

REV. A



NIDEC MOTOR CORPORATION 12-Apr-16

REFER TO S.E.I.M. 24-1

REVISION RECORD FOR: ECO E25436  
 I UPDATED HP=1, SF=1.15, AMPS=3.1-3.0/1.15, HZ=60&50 & RPM=1725 & 1425, ON PAGES 1 & 2.

TOLERANCES ON DIMENSIONS (UNLESS OTHERWISE SPECIFIED)

INCHES  
 .XX =  $\pm$ .010  
 .XXX =  $\pm$ .005

ANGLES X° =  $\pm$ 1°

**NIDEC MOTOR CORPORATION**

INFORMATION DISCLOSED ON THIS DOCUMENT IS CONSIDERED PROPRIETARY AND SHALL NOT BE REPRODUCED OR DISCLOSED WITHOUT WRITTEN CONSENT OF NIDEC MOTOR CORPORATION

REVISION DATE:  
**12-APR-16**

ISSUED BY: **G. MEDINA**

ENGINEER APPROVED: **T. BOSSALLER**

TITLE  
**CUSTOMER DETAIL DRAWING**

CODE  
**V02**

ITEM NO.  
**804527**

REV  
**A**

SHEET NUMBER  
 1 OF 4

DWG SIZE  
**B**