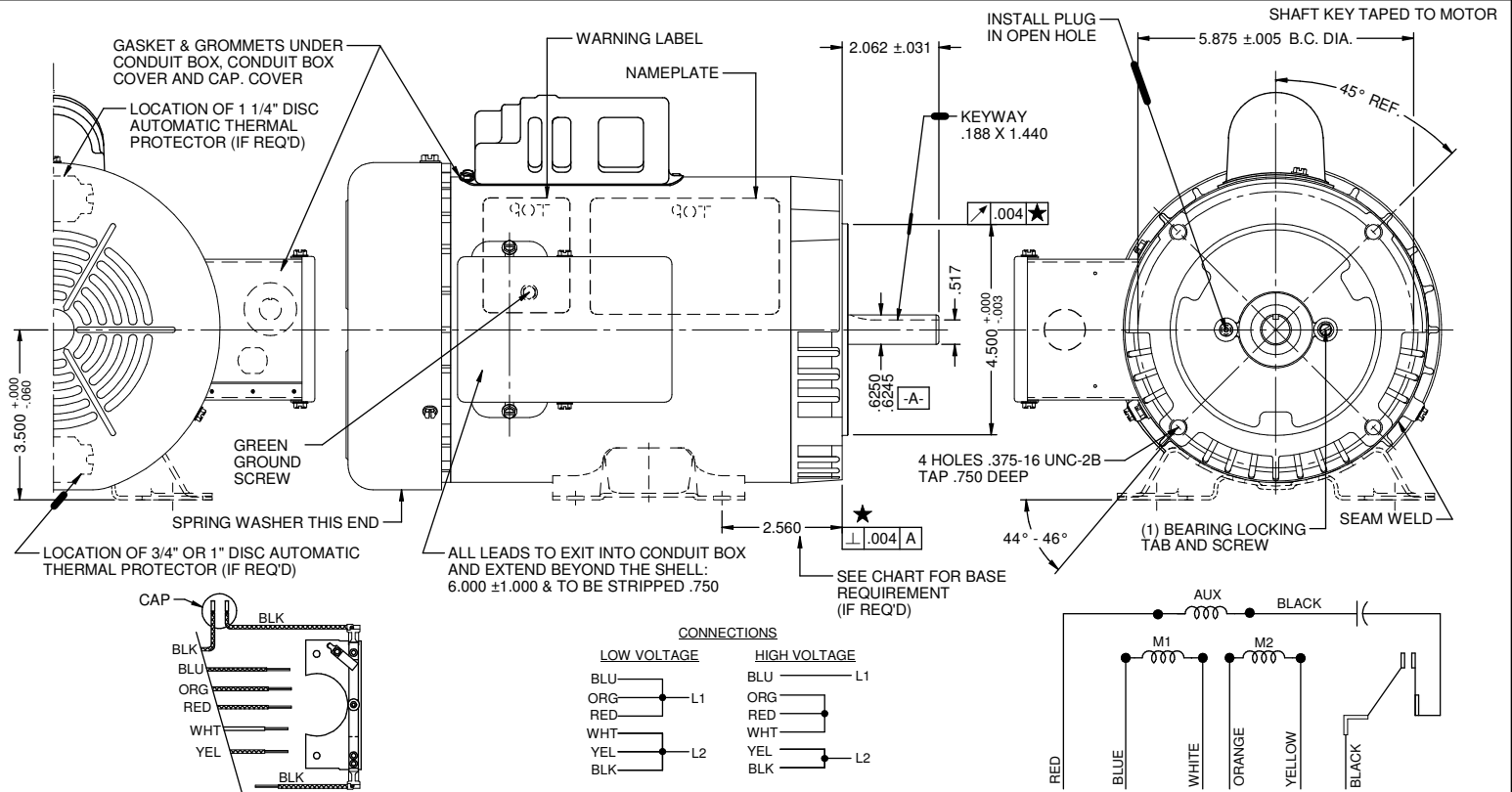


CRITICAL REQUIREMENTS

1.) SECURE LEADS TO WINDING TO MAINTAIN CLEARANCE FROM MOVING PARTS.



NIDEC MOTOR CORPORATION 12-Jun-15

CREATED DRAWING	REVISION RECORD FOR:	JC 69711
ISSUED BY:	ENGINEER APPROVED:	
A. SAUCEDO	M. GUZMAN	

TOLERANCES ON DIMENSIONS (UNLESS OTHERWISE SPECIFIED)	
INCHES	mm
XX = ± .010	
XXX = ± .005	
ANGLES X° = ± 1°	

DESCRIPTION:		NIDEC MOTOR CORPORATION		REVISION DATE:	
CAP. START, TEFC, C-FACE MTD.				08-JUN-15	
TITLE	CODE	ITEM NO.	REV	SHEET NUMBER	DWG SIZE
FACTORY DETAIL DRAWING	V02	804914	--	3 OF 4	B

V02_NMCB (MAR 2014)

SOLIDEDGE