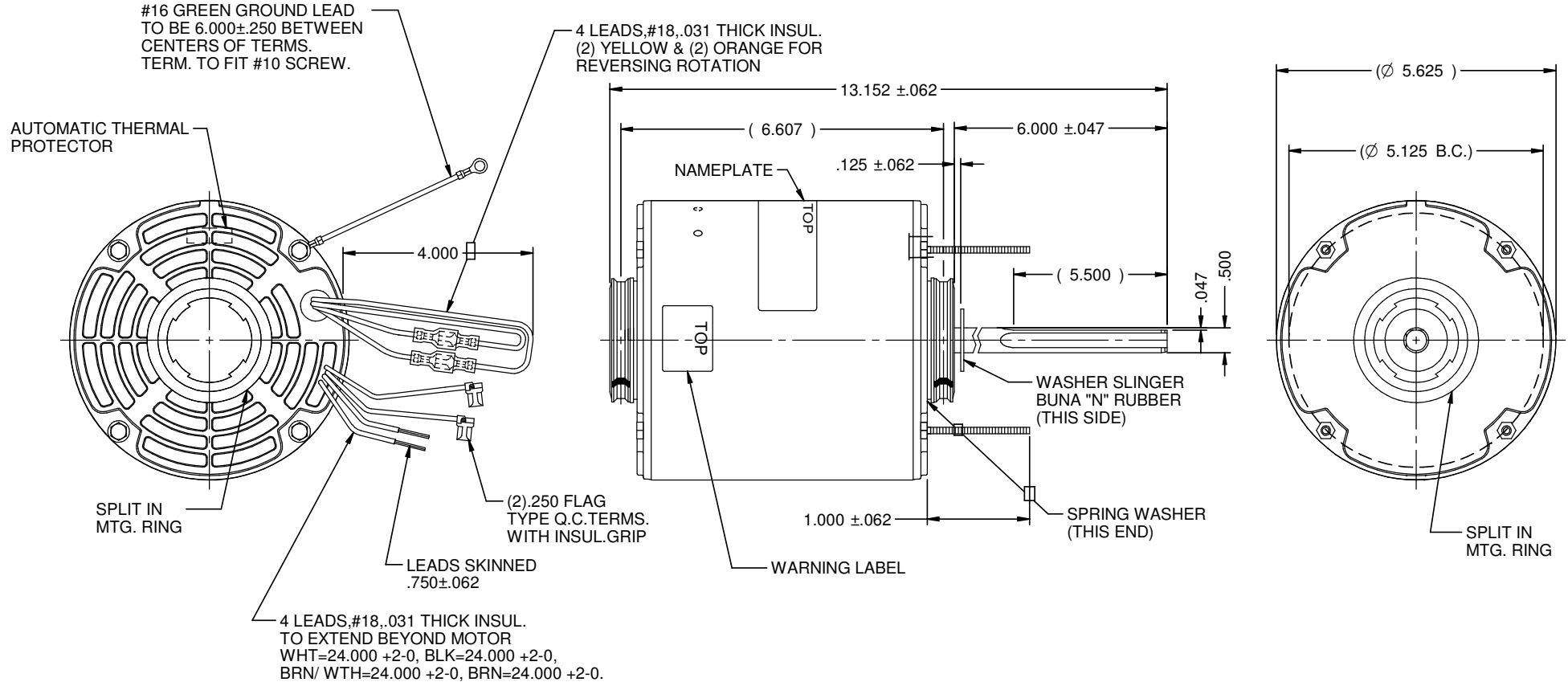


MODEL	REF	CUSTOMER	HP	VOLTS	AMPS	HZ	RPM	ROTATION	CUSTOMER PT. NO.	DESCRIPTION / REMARKS
K55HXSEP-655		STANDARD	1/2	208-230	2.8	60	825	CCW LEAD END REV	7041	K55 HUB MTD., OR STUD MTD., BALL BRG, OPEN

SUPPLIED DETACHED
4 RINGS OUTER HUB



NIDEC MOTOR CORPORATION 28-May-19

REFER TO S.E.I.M. 24-1

REVISION RECORD FOR: ECO: E32643

NEW DRAWING.	DIMENSIONS ARE FOR REFERENCE ONLY
DELETED NOTE INFORMATION "1 INSTR. FORM" UNDER ECO E34367	
ISSUED BY: G. ISASSI	UNLESS TOLERANCE IS SPECIFIED
ENGINEER APPROVED: Z. TREVIÑO	

NIDEC MOTOR CORPORATION

INFORMATION DISCLOSED ON THIS DOCUMENT IS CONSIDERED PROPRIETARY AND SHALL NOT BE REPRODUCED OR DISCLOSED WITHOUT WRITTEN CONSENT OF NIDEC MOTOR CORPORATION

REVISION DATE: 14-NOV-18

TITLE		CODE	ITEM NO.	REV	SHEET NUMBER	DWG SIZE
CUSTOMER DETAIL DRAWING		V02	823547	-	1 OF 3	B